

Spring 25

PORTA ROMANA

LIGHTING & FURNITURE



All pricing are shown in Euros. Excludes taxes, crate and freight costs.



Textural *Versatile*

For the first time, the Spring collection will be handcrafted in one material only, ceramic.

Ceramic

We have fallen more and more in love with the versatility and scope of this *ancient material*, and the endless ways in which it can be glazed and *adapted* to a variety of uses.

The Spring 25 collection includes a selection of new colourful glazes, each one with a *distinct* personality — Tigers Eye created from mottled black glaze over brown, a rich Crème Brûlée, Safari or stunning Capri, evocative of turquoise seas using sand to create the explosive finish.

One of the most *exciting* aspects is the application of ceramic for new wall light designs and a unique mirror frame created using several complex moulds, creating details and colourings that would be *impossible* in any other material.





Sampson

Tigers Eye

Shown with 14" Bongo in Natural linen

Height with shade: 660mm | 25 ¾"

Width with shade: 360mm | 14 ¼"

€1,280 | Shade €314

[Discover Sampson](#)



Finley

Crème Brûlée | Safari

Shown with 16" Bongo in Natural linen

Height with shade: 740mm | 29"

Width with shade: 410mm | 16"

Available in any painted finish of your choice

€2,345 | Shade €410

[Discover Finley](#)



Hand *Crafted*

The vision, to create beauty in everything we do, that is why all our products are handcrafted and hand-finished using only the finest craftspeople and production methods to shape every detail.



Inspired by beauty in the natural world, we transform the ordinary into the extraordinary. Striving to create a unique design language that pushes boundaries through our use of innovative techniques and materials. Every maker we collaborate with brings their expert knowledge and craft to the fabrication of their designs, imprinting each one with a unique character.

The Spring 25 collection is no exception, featuring only handcrafted ceramics. The Barnacle for example is sculpted and cast in-house at our studio in Surrey, each lamp body is then slip-cast by one of our expert makers in Portugal – a method used to make complex ceramics that involves pouring liquid clay into a mould to create a hollow form – with each barnacle then individually hand-applied before the lamp is glazed and fired.

THE ART OF CRAFTSMANSHIP





Barnacle

Safari | Pudding | Capri | Almond | Tigers Eye

Shown with 12" Low Hat in Natural linen

Height with shade: 500mm | 19 1/2"

Width with shade: 310mm | 12 1/4"

€1,450 | Shade €260

[Discover Barnacle](#)



Pumpkin

Sunflower | Snowflake | Campfire
Shown with 10" Bongo in Natural linen

Height with shade: 390mm | 15 ½"

Width with shade: 255mm | 10 ¼"

Available in any painted finish of your choice

€780 | Shade €238

[Discover Pumpkin](#)



Casaubon Large

Clay White with Very Decayed Silver | Decayed Gold

Shown with 16" Tall Cylinder in Natural linen

Height with Shade: 710mm | 28"

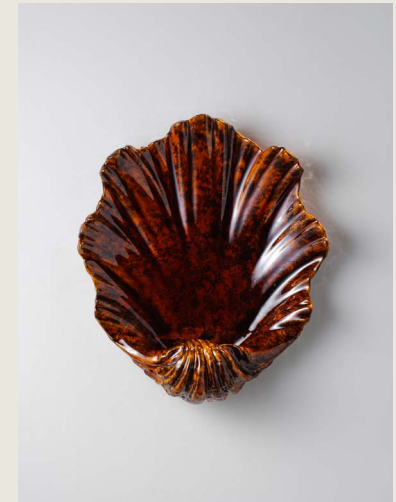
Width with Shade: 406mm | 16"

€1,385 | Shade €369

[Discover Casaubon](#)







Scallop Small

Capri | Myrtle | Safari | Tigers Eye

Height: 400mm | 15 ¾"

Width: 350mm | 13 ¾"

Available in any painted finish of your choice

€1,980

Discover Scallop



Bolla

Almond | Safari | Myrtle | Tigers Eye | Pudding

Height: 235mm | 9 ¼"

Width: 290mm | 11 ½"

€1,350

[Discover Bolla](#)



Brae

Tigers Eye | Pudding | Safari

Height: 370mm | 14 ½"

Width: 285mm | 11 ¼"

€1,350

[Discover Brae](#)





Rupi Small

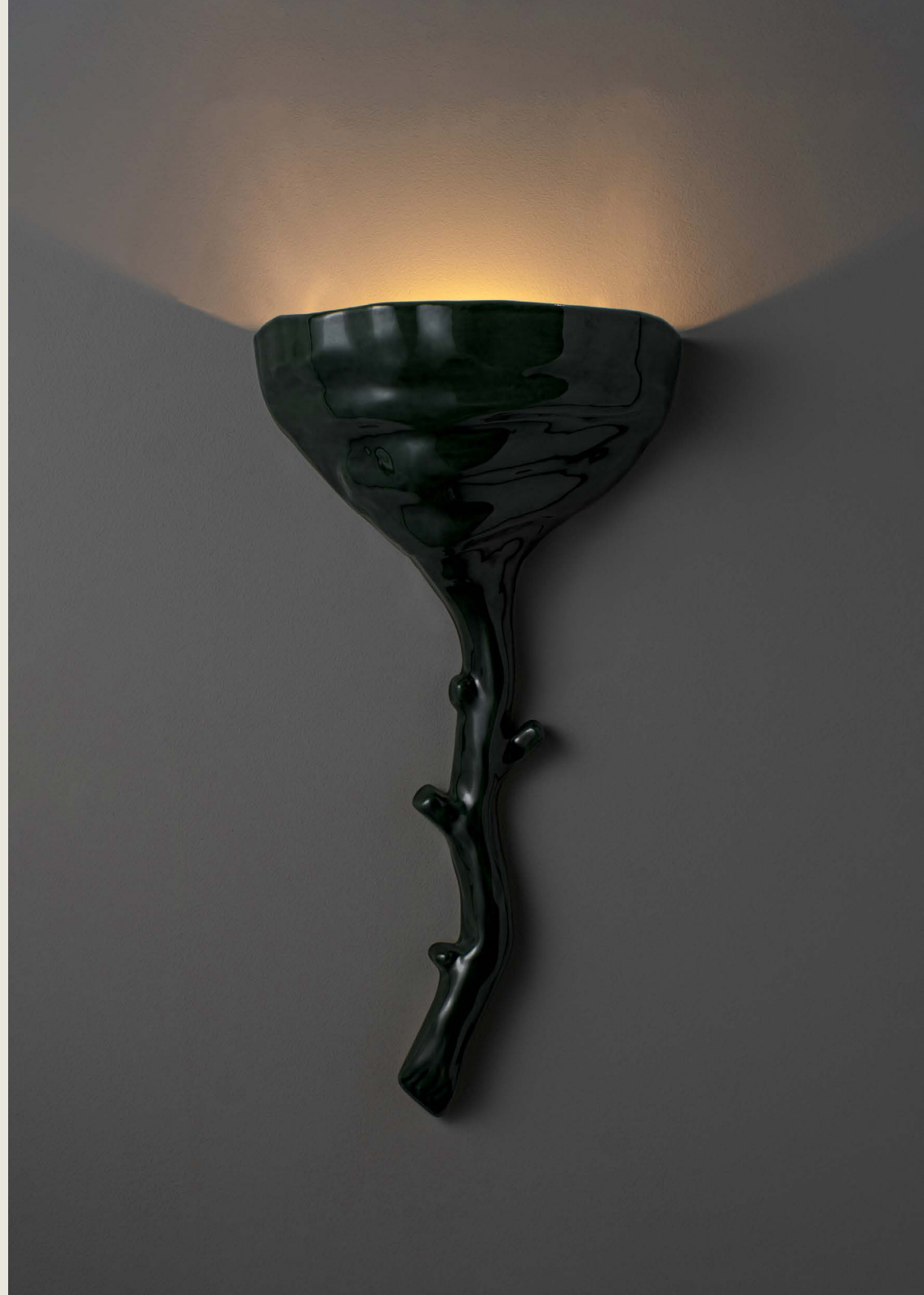
Pudding | Tigers Eye | Almond | Myrtle

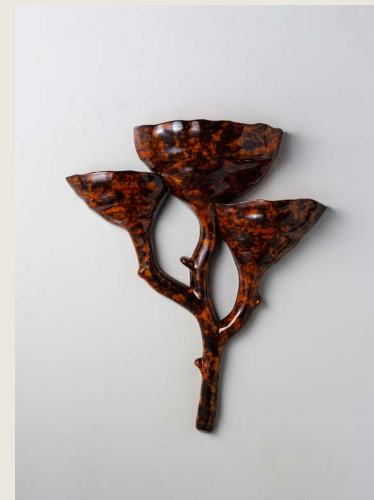
Height: 440mm | 17 ¼"

Width: 220mm | 8 ¾"

€1,085

[Discover Rupi](#)





Rupi Large

Pudding | Tigers Eye | Almond | Myrtle

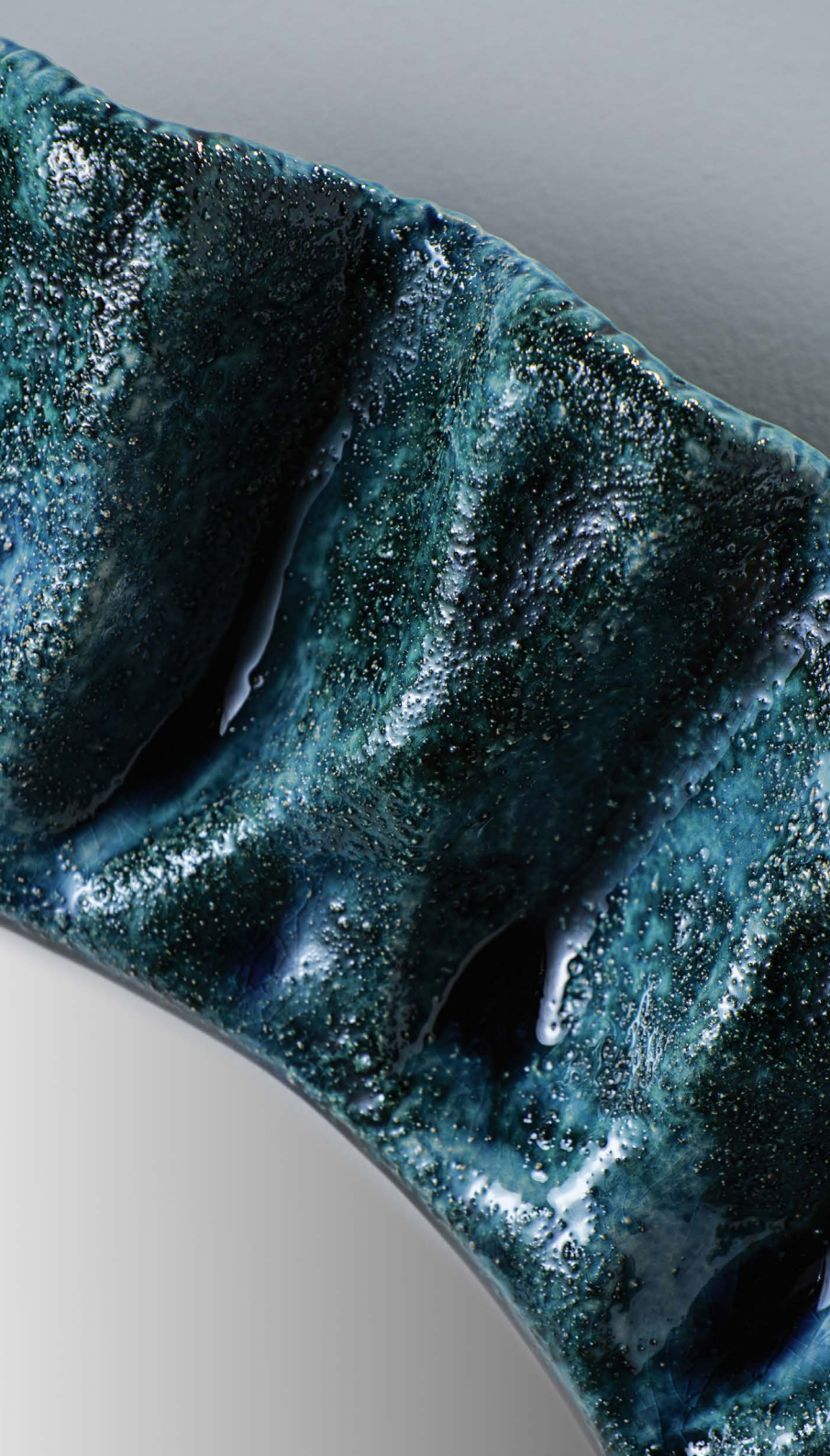
Height: 480mm | 18 ¾"

Width: 390mm | 15 ¼"

€2,230

[Discover Rupi](#)





Galia

Capri | Crème Brûlée | Safari

Diameter: 730mm | 28 ½"

Projection: 100mm | 4"

€5,175

Discover Galia



PORTAROMANA.COM